

**VINNO<sup>R300</sup>VET**  
Versatile Veterinary Care with Intelligence



VINNO Technology (Suzhou) Co., Ltd.  
5F, A Building, No.27 Xinfu Rd, Suzhou Industrial Park, 215123, China  
Tel: +86 512 62873806  
Fax: +86 512 62873801  
E-Mail: [vinno@vinno.com](mailto:vinno@vinno.com)  
URL: [www.vinno.com](http://www.vinno.com)

VINNO reserves the right to make changes to product specifications at any time.



# DRIVEN BY VERSATILITY AND INTELLIGENCE

Savvy, adaptive, and strong in its simplicity, the wolf symbolizes the R300VET's ability to thrive in any clinical setting.

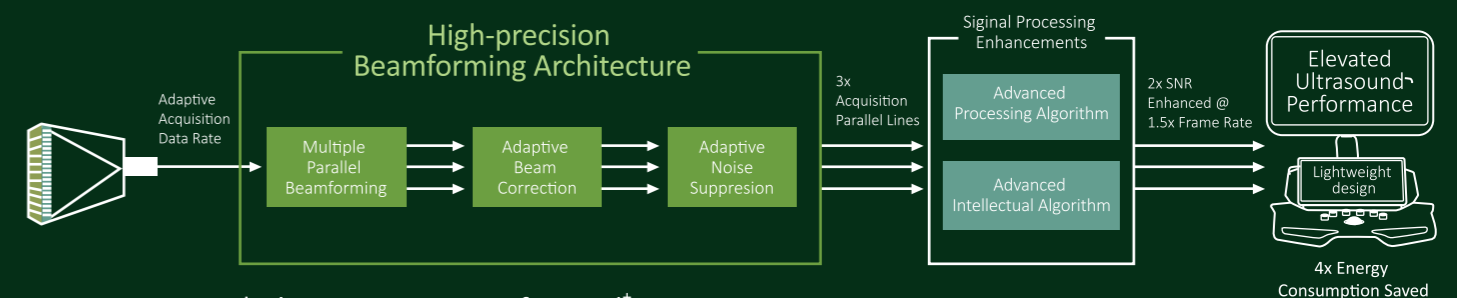
R300VET is a versatile, reliable companion for veterinarians, offering high-quality imaging and intuitive operation across a wide range of applications. Whether it's small animal care or large livestock, R300VET delivers consistent, powerful performance, allowing veterinarians to provide accurate diagnostics with confidence.

-  **Productivity**  
Streamline your workflow with fast, efficient performance.
-  **Clarity and confidence**  
Deliver clear, precise imaging for confident diagnostics.
-  **Intelligent performance**  
Smart technology adapts to your diagnostic needs.
-  **Battery support**  
Reliable power for uninterrupted, mobile scanning.



## Advanced Veterinary Imaging Performance

Powered by the VLucid+ platform, the VINNO R300VET redefines veterinary ultrasound with unmatched imaging clarity and color flow sensitivity, elevating animal care experience. It is designed to exceed the expectations of veterinary professionals, delivering a highly efficient and versatile imaging solution tailored for diverse animal care needs.



\* The improvement of VLucid+



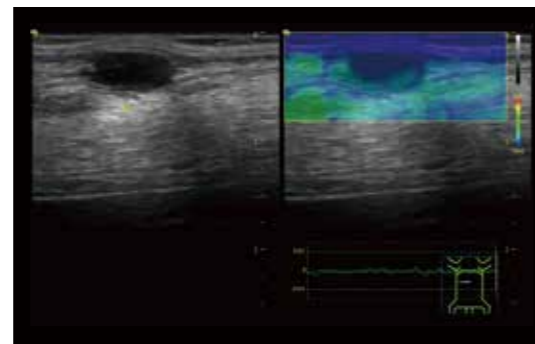
# Advanced Abdominal Imaging Solutions

## Built-in scanning tutor - Tutorial

Providing beginners with anatomical illustrations, transducer positioning videos, standard ultrasound videos and scanning tips.

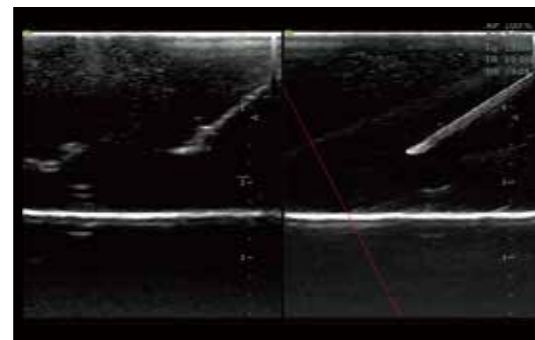
### Semi-quantitative tool assessment of tissue stiffness - Elastic Imaging

A semi-quantitative tool measures the relative stiffness between lesion and reference, to help detect early signs of some forms of cancer.



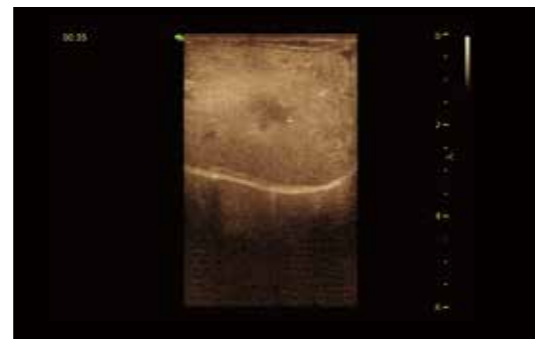
### Enhanced needle visualization - Needle Enhancement

Allow a straightforward needle approach with enhanced needle visualization to target and improve accuracy for needle procedures.



### Real-time visualization of tissue perfusion and vascularity - CBI

Provides real-time assessment of blood flow, resulting in greater sensitivity of micro vessels, and help evaluation of organ perfusion, aiding in the characterization of normal and abnormal lesions.

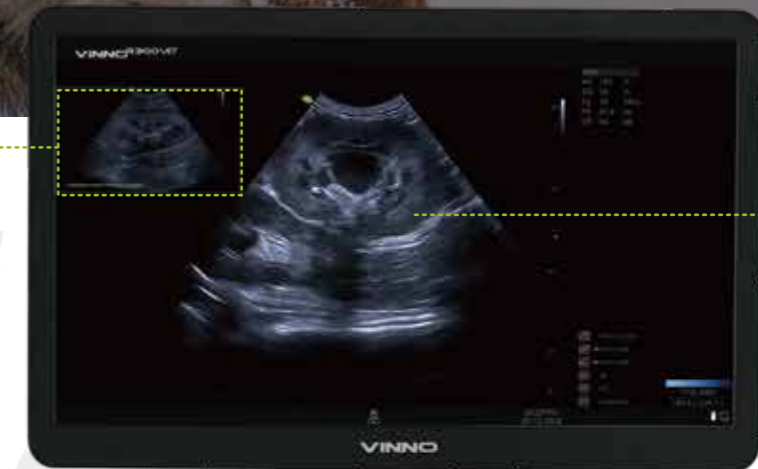


Displayed in both the main monitor and the touch screen

Read-time scanning with reference

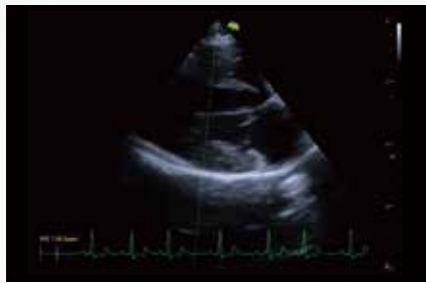
Tutorial on 6 organs

Tip on transducer position and anatomical structure display

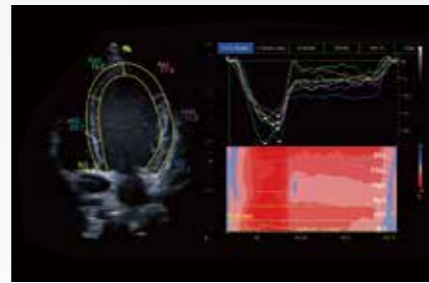




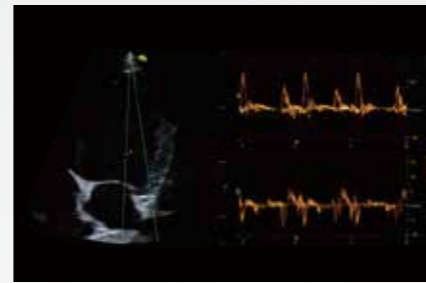
# Comprehensive Cardiac Scanning Protocol



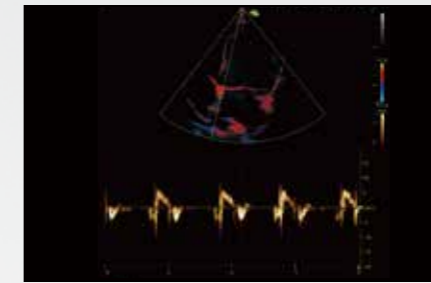
AI-driven feature that automatically guides veterinarian to standard cardiac planes in real-time.



Offers advanced LV/LA/RV strain analysis for improved assessment of both systolic and diastolic function



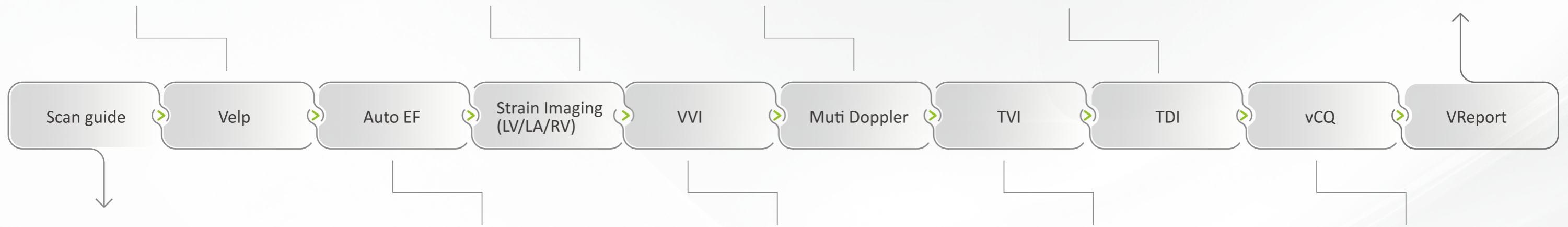
Captures multiple Doppler waveforms for comprehensive cardiac cycle analysis.



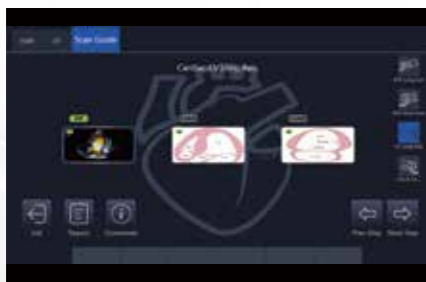
Measures tissue velocities for a detailed analysis of myocardial movement.

Patient Info					
Name	Golden King	Golden King	Golden King	Golden King	Golden King
Age	Golden King	Golden King	Golden King	Golden King	Golden King
Sex	Golden King	Golden King	Golden King	Golden King	Golden King
Ref/Physician	Golden King	Golden King	Golden King	Golden King	Golden King
Measure					
Measure	Result	Unit	Normal Range	Result	Unit
EF (Teich)	75.50%	%	55-70%	75.50%	%
EF (SVM)	45.84%	%	45-60%	45.84%	%
EF (VQ)	32.55%	%	30-50%	32.55%	%

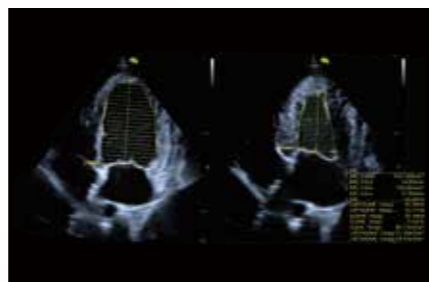
Generates exclusive veterinary reports with customizable templates for streamlined documentation.



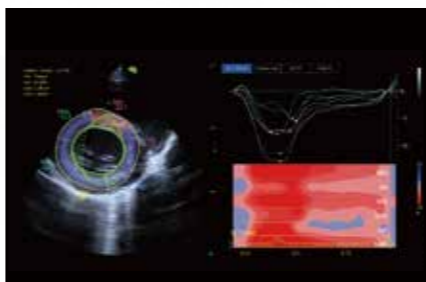
Provides step-by-step guidance through the cardiac scanning process, ensuring consistency.



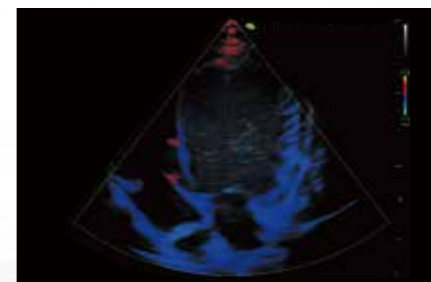
Automatically evaluates 2D echo clips to provide precise measurements of left ventricular function, simplifying cardiac analysis.



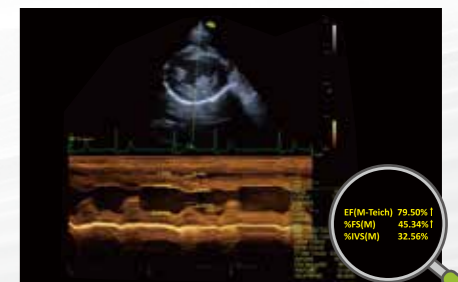
Measures myocardial velocities in all directions, offering comprehensive insights into myocardial function



Evaluates tissue movement to assess the diastolic function of the left ventricle



Flags abnormal cardiac measurements, helping veterinarians quickly identify and address issues.



EF (Teich) 75.50% |  
EF (SVM) 45.84% |  
EF (VQ) 32.55%

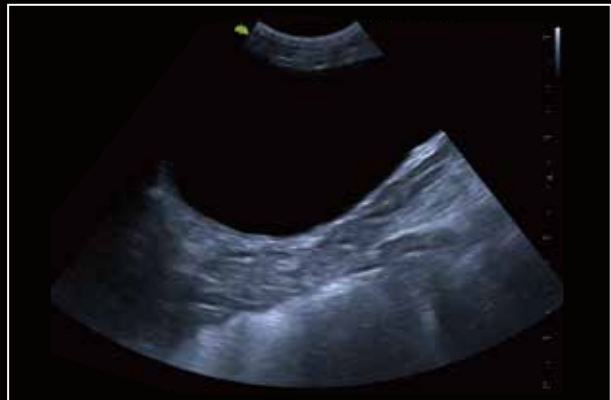
# Image gallery



Feline reproduction



Canine intestine 2D



Canine bladder 2D



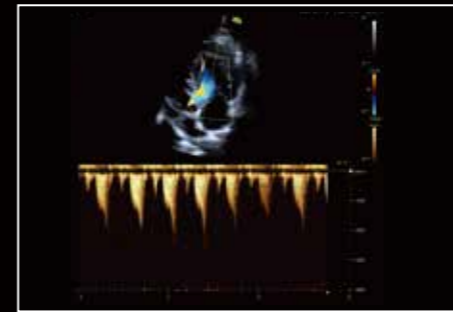
Canine kidney CF



Canine gall bladder 2D



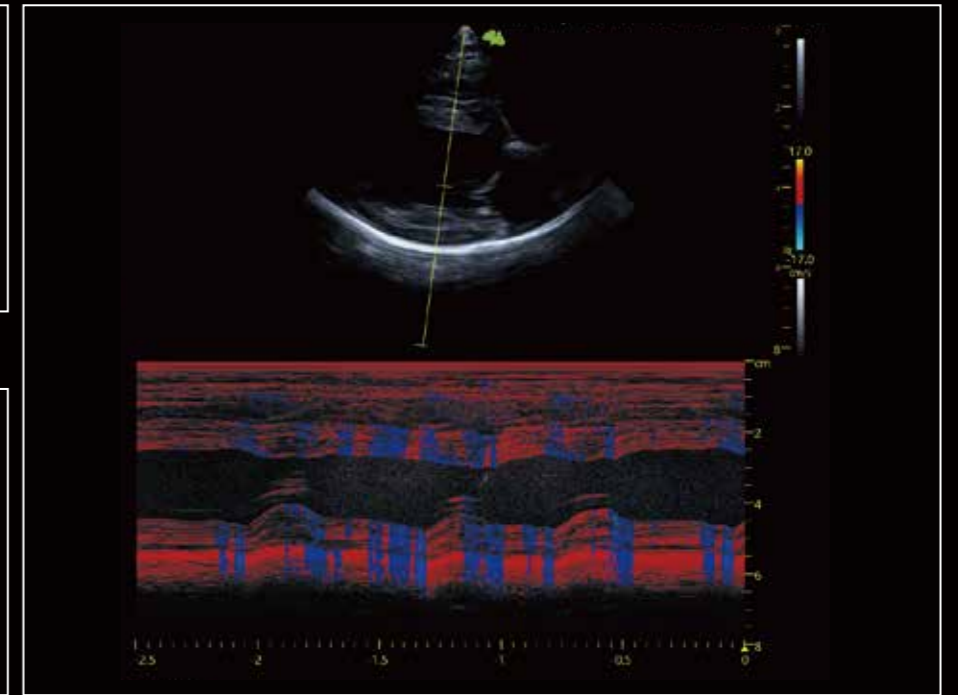
Canine spleen 2D



Canine CW



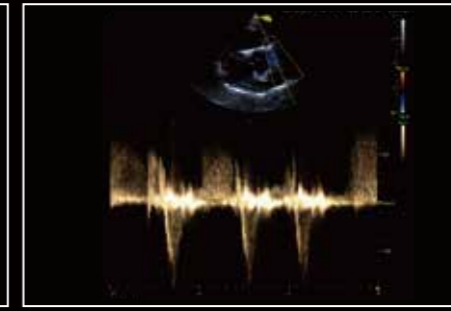
Canine cardiac 2D



Canine TVM



Canine pulmonary artery



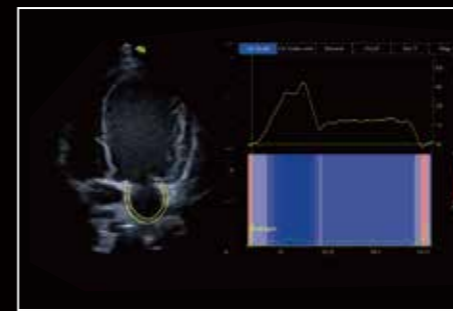
Canine cardiac PW



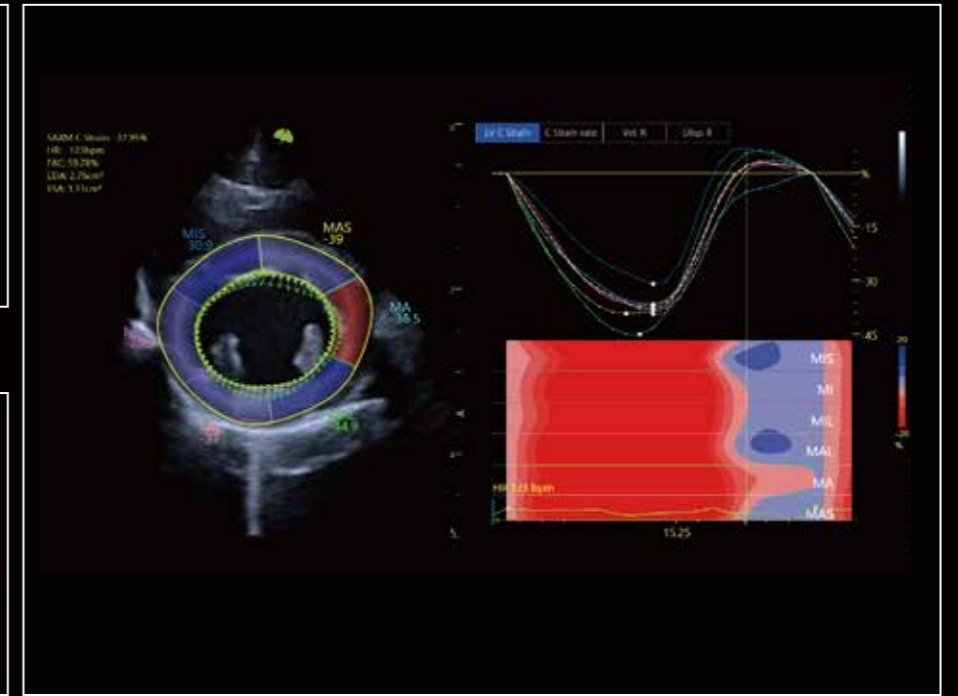
Canine LV long-axis view



Canine M mode



Canine LA Strain



Feline VVI



# Transducer Solution

## Small Animal Solution

Cat, small dog and exotic small animals

Abdomen & Reproduction

Superficial & Musculoskeletal

Cardiology



G3-9M G4-9M



F4-12L X4-12L X6-16L



G3-10P G4-12P

## Large Animal Solution

Big size dog, horse, cattle, sheep and exotic big animals

Abdomen

Cardiology

Equine tendon



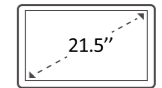
F2-5C



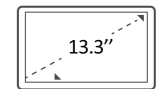
G1-4P



X4-12L X6-16L



21.5" large monitor



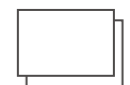
Tiltable 13.3" touch screen



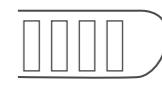
In-built gel warmer



Height and direction adjustable console



Built-in battery for 60-minute continuous scanning



4 active ports